

BLOXHAM PARISH COUNCIL EMERGENCY PLAN

CONTACT DETAILS

- <http://www.bloxhamparishcouncil.co.uk/>
email bloxhamparishcouncil@gmail.com

Clerk, Theresa Goss, on 01295 710965

Plan last updated on: 13TH November 2020

If you are in immediate danger call 999

Plan approved by Bloxham Parish Council on 7 December 2020.

1. INTRODUCTION

The Bloxham Emergency Plan has been created by Bloxham Parish Council and is held by the Clerk and Oxfordshire County Council, in order that in the event of an emergency, there is a clear understanding of the roles and responsibilities of the various support Agencies and a plan to enlist local people to help others in the community – including a list of contacts should residents require help.

The plan is intended to provide a self-help response, during any emergency which may affect the parish community when the normal emergency response by the Emergency Services and Oxfordshire County Council is delayed because of the scope or nature of the emergency.

2. LEVELS OF EMERGENCY

From research it has been established that there are three recognised levels of emergency

ONE – a major catastrophic event that would require large capacity shelters and support. Such incidents would require very large premises (potentially larger than the village hall) to accommodate and manage large numbers of temporary “refugees”.

Bloxham need not concern ourselves too much with this category as the Parish Council would be approached as part of this measured co-ordinated scheme initiated by a higher tier authority; namely Oxfordshire County Council.

TWO – a major emergency at Oxfordshire County Council level, or beyond, where the management of the event would be undertaken at County level.

Whilst the Village Halls could be receiving stations for displaced persons, and selected local people involved in support, this need not be of immediate concern to the Parish Council, as support services such as Oxfordshire County Council Service for Families would be contacted prior to ourselves and they would rally around instructing the necessary services to support.

THREE – A local emergency within the Parish of Bloxham which, though inevitably involving the higher levels of Government support (such as sandbags to deal with flooding), needs a high level of local involvement by local people as it is they who are most likely to know who is at risk and/or in need.

Bloxham Parish Plan will concentrate on the THIRD level category.

3. WHAT SORT OF EMERGENCY

Six types of event have been identified which could trigger a local emergency: -

1. Flooding, severe storms
2. Large scale evacuation due to a major event eg fire or pollution incident
3. Heavy snow fall
4. Localised utility failure of more than 4 hours

5. Major accident on the A361

6. National pandemic with the ability to spread rapidly within the community, affecting persons of all ages but particularly of concern to those in 'vulnerable' categories eg with underlying health issues, elderly, from an ethnic minority background.

Whilst all six would inevitably involve the emergency services and/or the major authorities, the knowledge of local people will be vital in mitigating the effects to the local community.

Flooding is perhaps the most likely scenario, however a National pandemic such as COVID 19 has been proven to be a major risk in recent months and may have longer term and ongoing effects eg mutations to the original virus resulting in reduced immunity for all residents, local or National lockdowns affecting the ability of residents to move freely from their homes and/or closing of local amenities. Residents should always follow Government guidance during a pandemic.

Plan distribution list

Name	Role	Phone number/email address	Issued on
Theresa Goss	Clerk and Responsible Financial Officer to Bloxham Parish Council	01295 710965 bloxhamparishcouncil@gmail.com	
Carol MacKay	County Emergency Planning Officer Community Safety Services Communities Directorate Oxfordshire County Council OFRS HQ Sterling Road Kidlington OX5 2DU	Tel: 07825 781803 carol.mackay@oxfordshire.gov.uk	
	Cherwell District Council Emergency Planning Officer As CDC and OCC are working jointly the contacts are the same.	Same as Above plus Paul Mann Emergency Planning Officer - Oxfordshire County Council Crew Manager - Bicester Fire Station Community Safety Services Communities Directorate Oxfordshire County Council Oxfordshire Fire and Rescue Service HQ Sterling Road Kidlington OX5 2DU Tel 07771 387416 Paul.mann@oxfordshire.gov.uk	

Plan amendment list

Date of amendment	Date for next revision	Details of changes made	Changed by
14 Nov 2020		Update of contact details National Pandemic added as a risk	John Lloyd

Contents

Local risk assessment.....	6
Local skills and resources assessment.....	7
Key locations identified with emergency services for use as places of safety.....	10
Emergency contact list.....	10
Sample telephone tree.....	11
List of community organisations that may be helpful in identifying vulnerable people or communities in an emergency	12
Activation triggers	13
First steps in an emergency.....	14
Community Emergency Group first meeting agenda	15
Actions agreed with emergency responders in the event of an evacuation	16
Alternative arrangements for staying in contact if usual communications have been disrupted	16
Additional Organisations Emergency Plans.....	17

Local risk assessment

Risks	Impact on community	What can the Community Emergency Group do to prepare?
Flooding:	<ul style="list-style-type: none"> • Flooding of local streets • Damage to property • Restrictions on local travel • Closure of local amenities and businesses 	<ul style="list-style-type: none"> • Encourage residents to improve home flood defences • Encourage businesses to create a contingency plan • Work with local emergency responders to see if they can help with distribution of flood warnings and any evacuation and rest centre establishment required • Find out what flood defences exist or are planned in the area
Loss of utilities <ul style="list-style-type: none"> • Gas • Electricity • Water 	<p><u>Gas</u> Loss of heating Potential for build up of gas when reconnected</p> <p><u>Electricity</u> Disruption of Medical Equipment. Loss of light</p> <p><u>Water</u> Loss of facilities for washing / toilets Loss of drinking water</p>	<ul style="list-style-type: none"> • Availability of power points for generators • Ensure residents who qualify are on Western Power's Emergency List
Heavy snow fall	Residents experience difficulty in accessing the shops, medical appointments	<ul style="list-style-type: none"> • Establish OCC contacts to ensure Tadmarton Road, Barford Road, Bloxham Grove Road and Milton Road are clear. • 4 X 4 drivers to help access uncleared side roads. • 4 X 4 drivers to help transport urgent goods eg prescriptions and/or residents for medical appointments
National Pandemic	<ul style="list-style-type: none"> • Restrictions on movements for all residents but those 	<ul style="list-style-type: none"> • follow National and local advice to reduce spread to others • create local support groups that can

	<p>deemed “essential workers”</p> <ul style="list-style-type: none">• reduced medical support except for emergencies• financial difficulties if unable to work due to national restrictions• reduced community infrastructure eg shops, doctors, dentists, church activities, school closures, leisure activities	<p>be activated to assist the more vulnerable or worst affected</p>
--	---	---

Local skills and resources assessment

Skill/Resource	Who?	Contact details	Location	When might be unavailable?
Trained first aider				
First Responders	Staff at the Dental Surgery	01295 721030	Church Street Bloxham	After 6.00pm and Weekends
4x4 owner/driver	Tom Smith	07796 175122	Milton Road Bloxham	
Chainsaw	Marie Jones	marielouise.jones@outlook.com		
Water/food supplies	Co-Op, Londis (Post Office)		High Street Bloxham.	After 11.00 pm at night
	Londis (Garage)		South Newington Road	At present 24hour service
Storage <i>Hydra packs</i> <i>Emergency packs</i> <i>Western Power</i> <i>Plug in phones</i>	Parish Council via the Clerk	01295 710965 bloxhamparishcouncil@gmail.com	Local secure storage	As required on initial contact
JCB plus bucket (Snow clearance)	B. Facon		Painters Farm Tadmarton Road	As required on initial contact

Key locations identified with emergency services for use as places of safety

Building	Location	Potential use in an emergency	Contact details of key holder
Jubilee Hall	Barley Close OX15 4NJ	Safe Place. Rest Centre. Kitchen. Showers Isolated space for Mortuary. Parking space Open Space	Glyn Williams 01295 720154 Stephen Phipps 01295 721049 Angela Morris 07788716506
Warriner School	Banbury Road Bloxham	Safe Place. Rest Centre. Kitchen. Showers Isolated space for Mortuary. Open Space Separate halls Parking space Access from the A361	Nichola Gardner 01295 720777
The Ex Serviceman's Hall	High Street Bloxham	Safe place. Rest Centre. Kitchen. Toilet Facilities Access from the High Street Located close to shops. No allocated parking	Phillip Davies 07781730698
St Mary's Church and Parish Rooms	Church Street Bloxham	Safe space. Kitchen Toilet facilities Limited Parking Large Church Space	Dale Gingrich 01295 720252 dalegingrich@hotmail.com

Building	Location	Potential use in an emergency	Contact details of key holder
Bloxham Primary School	Tadmarton Road OX15 4HP	Shelter. Provision of tables and chairs Hot drinks and meals <i>The Primary School may need support if pupils need evacuating to St Mary's Church.</i>	Matthew Ingall 01295 720224
Recreation Ground	South Newington Road	Open space for helicopter landing Potential open air storage space.	David Tyrrell Davidtyrrell54@yahoo.co.uk 01295 721313
Bloxham Bowls Club	The Ridgeway, OX15 4NF Vehicle access via Barley Croft.	A Club room, Male, female and disabled toilets, kitchen. A separate building (no heat) with two rooms	Des Jones 07391021097 01295 720497
Bloxham Mill Business Centre	Barford Road OX15 4FF	Has no emergency plan May be able to help.	01295 722800 Reception@bloxhammill.com
Bloxham School	Banbury Road OX15 4PE	Has its own Critical Incident Plan. Would be able where appropriate to provide support for Bloxham Community in the event of a major incident.	Charlie Little 01295 724303. c.little@bloxhamschool.com
Ellen Hinde Hall	Chapel Street Bloxham	Temporary Shelter, but no catering facilities.	Key will be provided 01295 722713
Godswell Park Care Home	Church Street Bloxham	Does have an Emergency Plan. Could make available the Cinema room (seats 100) for a dormitory. Has a large restaurant on site. 7 acres of land, could land a	John Wilmott 01295 724000 24 hour staff on site.

Building	Location	Potential use in an emergency	Contact details of key holder
		helicopter.	

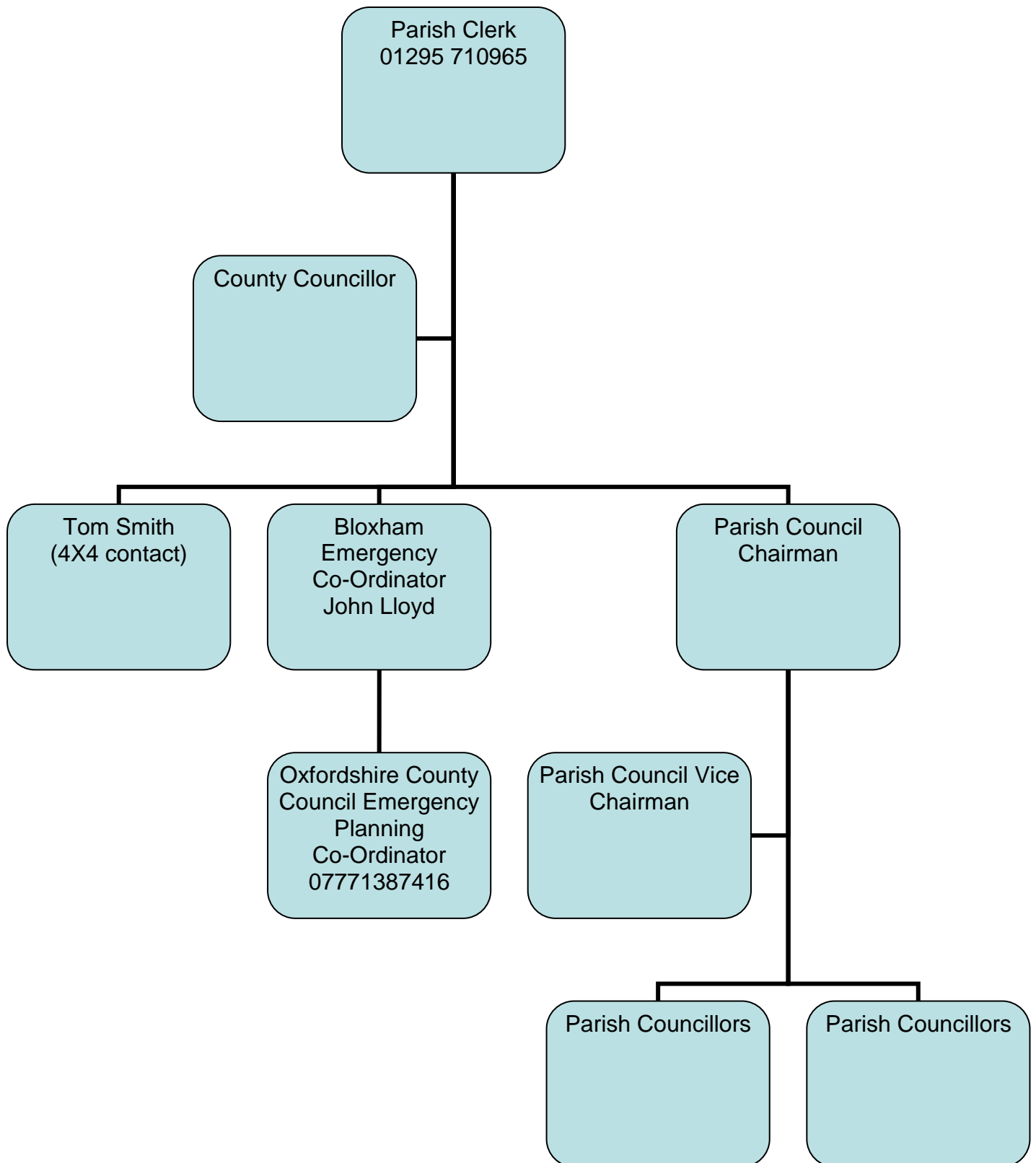
Emergency contact list

Photo	Name: John Lloyd
	Title: Community Emergency Coordinator
	07484613865
	johnlloyd77@btinternet.com
	13, Strawberry Hill Bloxham OX15 4NW
Photo	Name: Theresa Goss
	Title: Clerk and Responsible Financial Officer to Bloxham Parish Council
	24hr telephone contact: 01295 710965
	Email: bloxhamparishcouncil@gmail.com
	Address: 3, Tanners Close Middleton Cheney, Banbury, OX17 2GD

NATIONAL GRID GAS, ELECTRICITY AND TELECOMMUNICATIONS

- Gas - 0800 111 999
- Electricity - 0800 404 090
- In the event of a power cut dial 105 for all providers and they will update you
- ENVIRONMENT AGENCY - 0800 80 70 60

Contact telephone tree



List of community organisations that may be helpful in identifying vulnerable people or communities in an emergency

Organisation	Name and role of contact	Phone number
Godswell Doctors Surgery	Fiona Jefferies Practice Manager	01295 722788
Western Power		0800 6783 105 or call 105
Thames Water		0800 714614.
Gas		0800 111 999
St Mary's Thursday Club	Gloria Lester-Stevens	gloriastevens123@btinternet.com
Godswell Park Care Home		01295 724000
St. Mary's Church	Vicar – Dale Gingrich	01295 720252 dalegingrich@hotmail.com

Activation triggers

1. When we get a flood warning
2. When Resident rings the Parish Clerk
3. When heavy snow is forecast
4. When Oxfordshire County Council contact Parish Clerk/Emergency Coordinator regarding a local emergency.
5. Utility Companies contact Parish Clerk with details.
6. National Pandemic guidelines and rules – via HM Government

First steps in an emergency

	Instructions	Tick
1	Call 999 (unless already alerted)	
2	Ensure you and others in immediate vicinity are in no immediate danger	
3	Contact the Parish Clerk and the Emergency Coordinator	
4	Emergency Coordinator to contact Oxfordshire County Council / liaise with Emergency Services if required	
5	Parish Clerk to contact Parish Council Chairman and County Councillor	
6	Parish Council Chairman to contact Parish Vice Chairman and arrange contacting all Parish Councillors.	
7	Call a co-ordinating meeting if required	
8		
9		
10		

Community Emergency Group first meeting agenda

Date:

Time:

Location:

Attendees:

1. What is the current situation?

Location of the emergency. Is it near:

- A school?
- A vulnerable area?
- A main access route?
- Type of emergency:
- Is there a threat to life?
- Has electricity, gas or water been affected?

Are there any vulnerable people involved?

- Elderly
- Families with children

What resources do we need?

- Food?
- Off-road vehicles?
- Blankets?
- Shelter?

2. Establishing contact with the emergency services

3. How can we support the emergency services?

4. What actions can safely be taken?

5. Who is going to take the lead for the agreed actions?

6. Any other issues?

Actions agreed with emergency responders in the event of an evacuation

1. Help police/local authority with door knocking
2. Tell emergency services who might need extra help to leave their home

Alternative arrangements for staying in contact if usual communications have been disrupted

Communication Type	Name of contact	Location
Mobile Phones		
Old style "Plug in" phones in Emergency Store		

ADDITIONAL ORGANISATIONS THAT HAVE EMERGENCY PLANS IN PLACE

ORGANISATION		CONTACT
WARRINER SCHOOL	<ul style="list-style-type: none"> • The Warriner have an Emergency Plan • It is not at present lodged with Oxfordshire County Council Emergency Planning Department. 	Nichola Gardner 01295 720777
BLOXHAM PRIMARY SCHOOL	<ul style="list-style-type: none"> • Bloxham Primary School have an Emergency Plan. • It is not lodged with Oxfordshire County Council Emergency Planning Department. • <i>Part of their plan includes relocation to St Mary's Church. Additional help would be welcome.</i> 	Mathew Ingall 01295 720224
BLOXHAM SCHOOL		01295 720222 (Main switchboard) 01295 724341 (Headmasters Office) 01295 720222 (Bursars Office)
GODSWELL PARK CARE HOME		01295 724000